



Our energy makes yours cleaner

IMPCO Europe Technologies develops, manufactures and markets custom-made systems and products that support the use of clean burning gaseous fuels and reduce emissions from internal combustion engines to the lowest levels.

Through the years, we have become an experienced partner for Original Equipment Manufacturers (OEM's) and our distributors. Due to our strong commitment to quality, we have built an experienced team dedicated to meet our customers needs as well as producing products in accordance with the high emission standards.

Our experience and dedication to the market have made us the leader in the material handling gaseous fuel industry in Europe. IMPCO Europe Technologies is ISO 9002 certified since 1994 and more recently received the ISO 9001 : 2000 certificate in 2001.

IMPCO EUROPE Tech. BV
Distributieweg, 9
2645EG DELFGAUW
THE NETHERLANDS

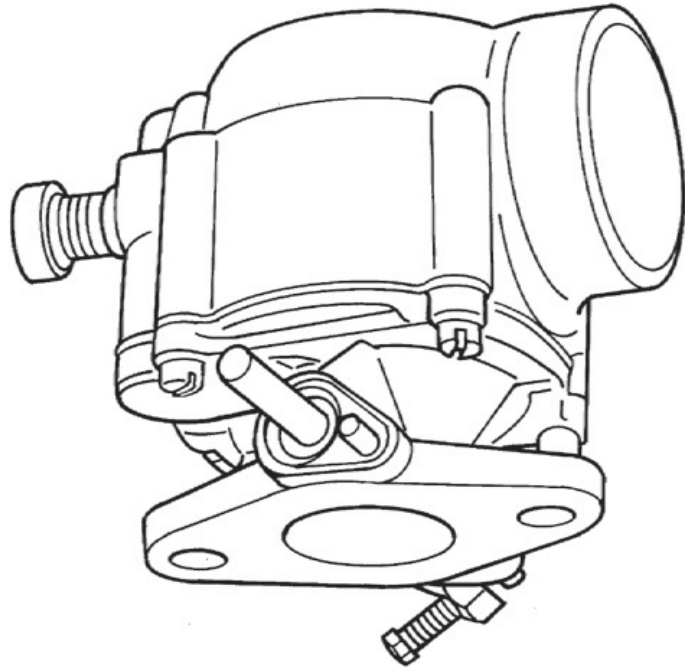
T + 31 15 274 2555
F + 31 15 274 2559

WWW.IMPCO-EUROPE.COM



CA55-SERIES CARBURETORS

Model CA55 Standard Series Carburetors for Natural & LPG



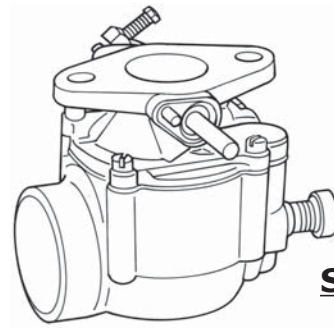
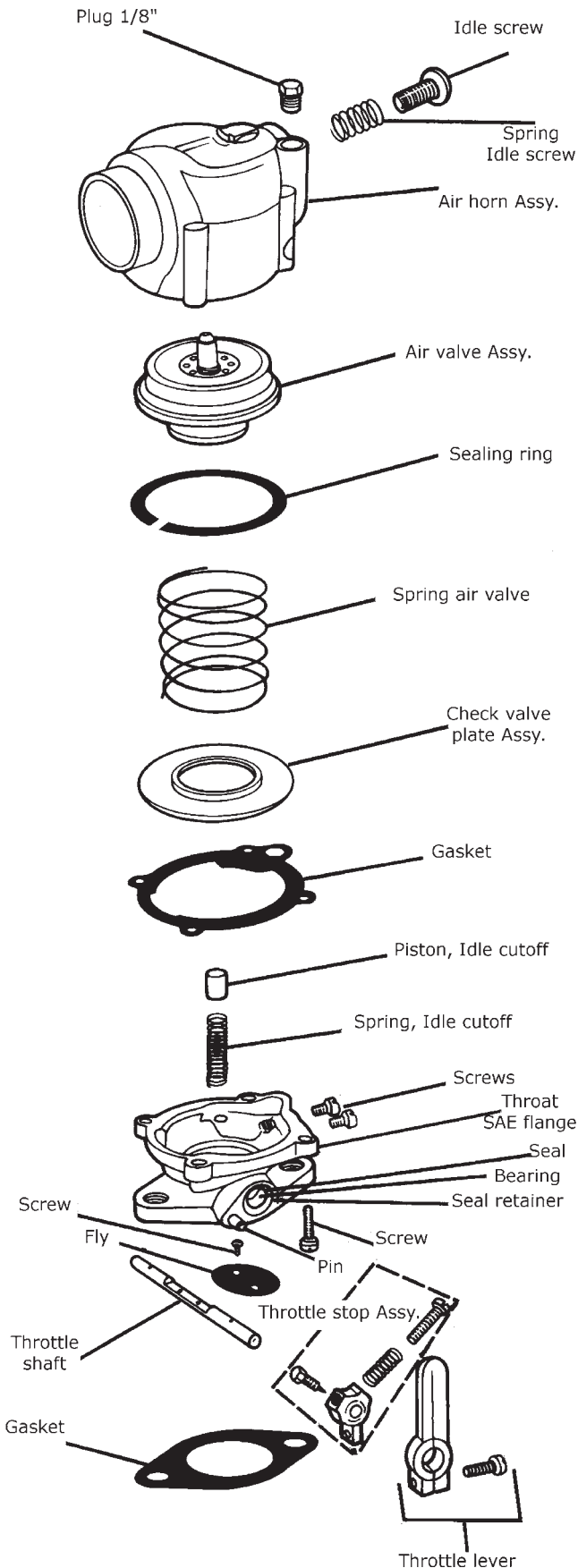
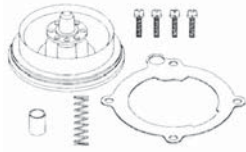
IMPCO's CA55 Series carburetors are offered in four design variation, updraft, downdraft or sidedraft orientation. The CA55 series carburetors are providing proven, effective solution for optimum metering and delivery of either alternative fuel configurations, gasoline in engine up to 52 kW (70 hp). The standard model can be mounted in either LPG or natural gas to engine from 1,5 to 70 hp. The maximum flow rate is 54,2 l/s (115 cfm). Various SAE flanges and airhorn sizes are available.

TECHNICAL DATA

Fuel	Natural or LPG gas
Flow	54.2 l/s. (115 cfm)
Horsepower rating	1 to 52 kW (1.5 to 70hp)

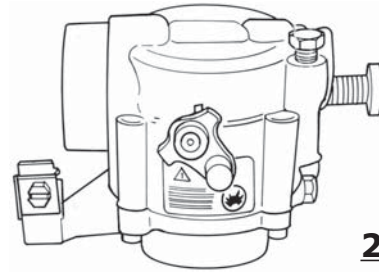
CA55-Series
- Sidedraft
- Updraft
- Downdraft

Repair kit : **RK-CA55**



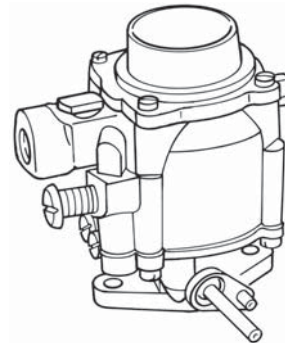
STANDARD

Air horn from 1"1/2 to 2"1/16
 SAE Flange from 1/2" to 1"1/4



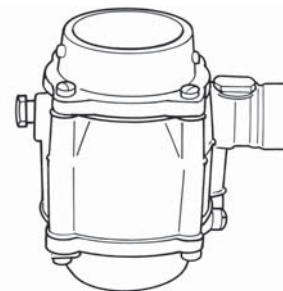
250 L

Air horn from 1"7/8 to 2"1/16
 Hose adapter from 1/2" to 1"1/4
Engineered for dual fuels



500 L

Air horn from 1"7/8 to 2"1/16
 SAE Flange de 1" to 1"3/4
Downdraft or updraft



750 L

Air horn from 1"7/8 to 2"1/16
 Hose adapter from 1/2" to 1"1/4
Engineered for dual fuel with high flow rate